



Employer Health Strategies: Agents of Change

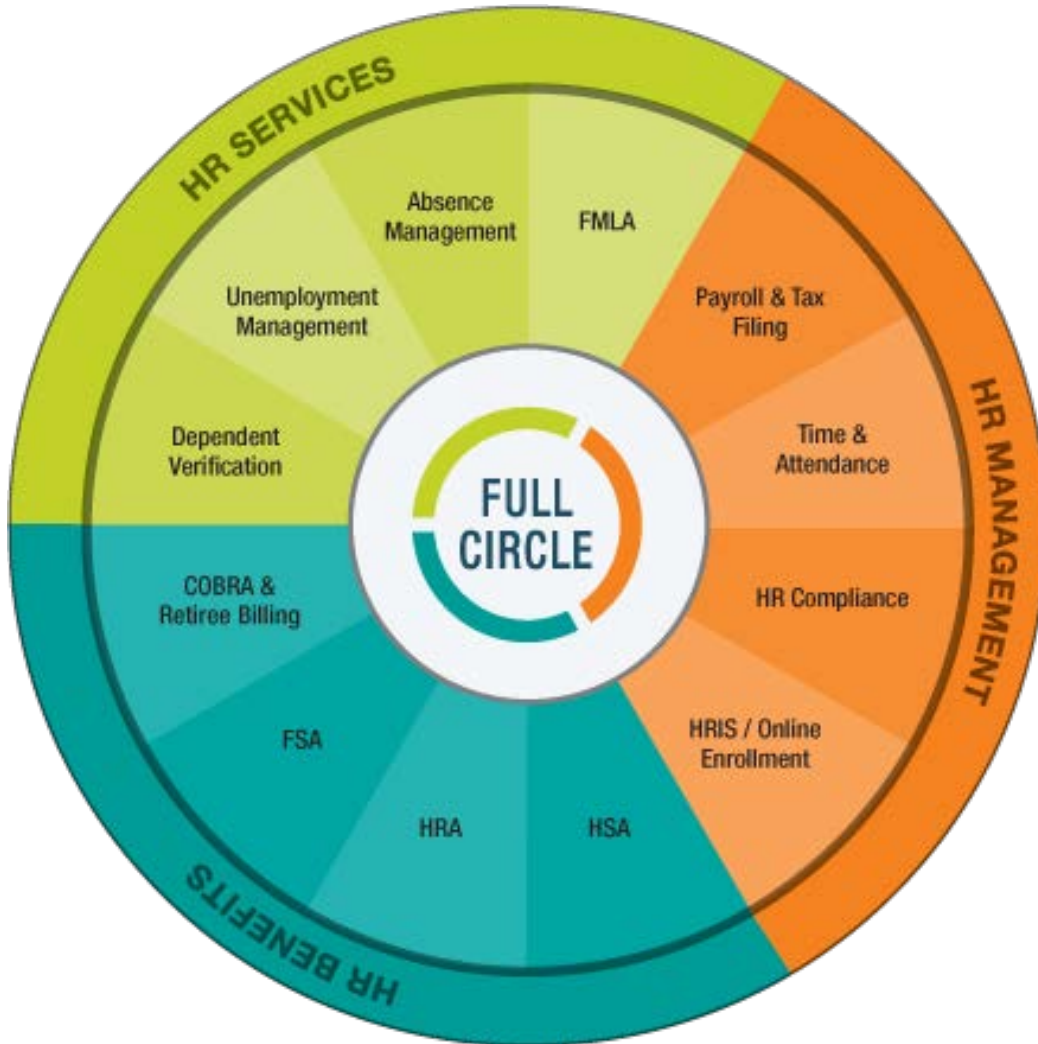
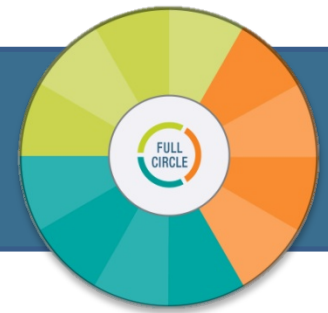
Presented by: James Gandolfo



- HR Benefits
- HR Management
- HR Services

We're proud to offer a full-circle solution to your HR needs. BASIC offers collaboration, flexibility, stability, security, quality service and an experienced staff to meet your integrated HR, FMLA and Payroll needs.

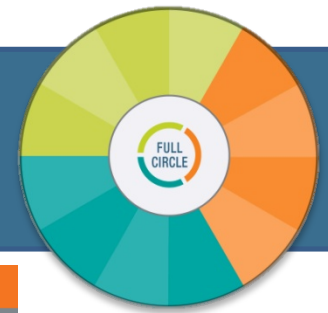
HR Solutions Come Full Circle



HR solutions should be simple.
Keep it BASIC.

BASIC's integrated HR solutions come full circle for employers nationwide. Consistently recognized as an Inc. 5,000 Fastest Growing Private Company, our expertise allows you to control costs, manage risks and improve staff focus and effectiveness.

Today's Presenter:



GET TO KNOW



JAMES GANDOLFO

SENIOR VICE PRESIDENT

TREASURY SOLUTIONS GROUP, PRODUCT ADVISOR

Office: 302-429-2832

Cell: 302-824-4616

james.gandolfo@pnc.com

Jim Gandolfo is a Product Advisor within PNC's Treasury Solutions Group. Jim has a varied background including, the securities sector, healthcare financial sector and for years has supported both industry and PNC's Treasury Management professionals related to comprehensive solutions for commercial payments, receivables and information management.

Currently, Jim is responsible for Consumer Driven Health development and distribution. Previously, he was with PNC Global Investment Servicing, where he was responsible for its Health Savings Account (HSA) administration solution. His experience also includes a long tenure with Wilmington Brokerage Services Company, a registered broker-dealer, where he was President & CEO.

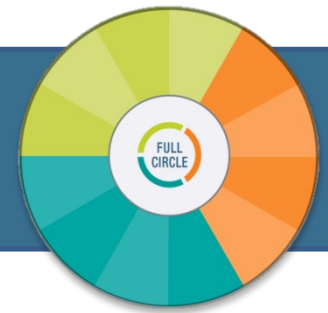
His FINRA licenses include Series 6, 7, 24 and 63. He is Chairman of the American Bankers Association's HSA Council and a member of the Board of Directors of the HSA Coalition. Jim has been recognized by an industry forum for his work with public policy.

He is a graduate of Radford University in Radford, Virginia and holds a Bachelor of Science degree in Political Science and History. He is based in Wilmington, Delaware.

The views expressed in these slides are solely the views of James S. Gandolfo who prepared them and do not

necessarily reflect the views of the PNC Financial Services Group (or PNC Bank, PNC, NA

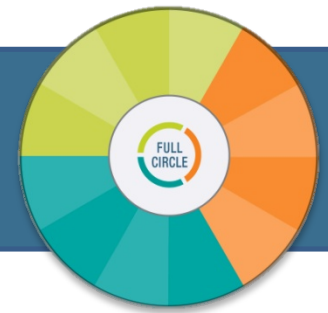
Discussion Points



- Current Update: Public Policy & Consumer Driven Health Accounts
 - Notional Accounts: Flexible Spending Arrangement; Health Reimbursement Arrangement
 - Health Savings Accounts
 - American Health Care Act and HSAs or Better Care Reconciliation Act
 - SB 403, Cassidy / Graham HSA Proposal; Tax Reform Bill; SCHIP or Budget Reconciliation Bill 2018
- National Employer Trends
 - Facts
 - Sentiments
 - Tactics

Definitions

HSA is authorized on legislation, notional is authorized by regulation*



Health Savings Accounts (HSA)

- Funded by employee, employer or combination
- Funds always belong to the account owner / employee



Flexible Spending Accounts or Arrangements (FSA)

- Fixed amount set aside by the employee pre-tax/employer
- Use it or lose it (must spend by end of plan year), or rollover \$500



Health Reimbursement Arrangements (HRA)

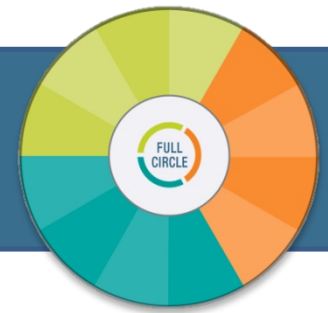
- Employer-funded “promise to pay”
- Unused funds remain with employer



*<https://www.irs.gov/pub/irs-pdf/p969.pdf> / <https://www.congress.gov/bill/108th-congress/house-bill/1>

Note: HSAs may be paired with Limited Purpose FSAs or HRAs covering dental or vision.

Relevant Regulation & Legislation



Flexible Spending Arrangements:

- U.S. Treasury modification to “Use It or Lose It Rule” (2015)*
 - I. Allows a \$500 rollover from plan year to next plan year



Health Reimbursement Arrangements:

- Qualified Small Employer Health Reimbursement Arrangement (Cures Act 2016)**
 - I. “...the arrangement is funded solely by an eligible employer, and no salary reduction...”
 - II. “...provides, (after employee proof of coverage), payment to, or reimbursement of, an eligible employee for expenses for medical care (as defined in Code section 213(d)) incurred by the eligible employee or the eligible employee’s family members
....”
 - III. “...the amount of payments and reimbursements ... for any year do not exceed \$4,950 (\$10,000 ...payments or reimbursements for family members of the employee...)”
 - IV. “...the arrangement is provided on the same terms to all eligible employees of the eligible employer “

* <https://www.treasury.gov/press-center/press-releases/Documents/103113FSA%20Fact%20Sheet.pdf>; <https://www.irs.gov/pub/irs-pdf/p969.pdf>

** <https://www.dol.gov/sites/default/files/ebsa/about-ebsa/our-activities/resource-center/faqs/aca-part-35.pdf>

Legislation to Watch

Health Savings Accounts

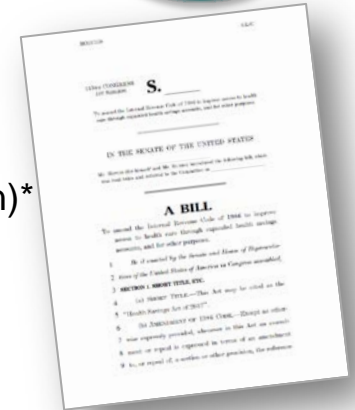


Health Savings Act of 2017 (Hatch, Rubio S. 403*)

& U.S. Budget Reconciliation Process

HR 1628, Senate Bill BCRA and Graham / Cassidy Amendment**:

- Repeal Rx requirement for OTC medicine distributions from HSAs (Hatch-Paulsen)*
- Lower penalty for non-qualified distributions to 10% (Hatch-Paulsen)*
- Raise HSA contribution limits to HDHP OOP Max (Hatch-Paulsen)*
- Allow spouses to make catch-up contributions to the same HSA (Hatch-Paulsen)*
- Expenses incurred within 60 days of HDHP coverage but before HSA account is established (Hatch- Paulsen)*
- Excess premium tax credit funds may be deposited into HSAs.**
- Purchase of insurance from a HSA. (HSA qualified policies, individual market only)***
- Primary care enhancement***
- Exclusion from HSAS of HDHPs including coverage for abortion except when necessary to save the life of the mother or if the pregnancy is the result of rape or incest, beginning in 2018.



* <https://www.congress.gov/115/bills/s403/BILLS-115s403is.pdf> / <http://www.cbpp.org/research/using-reconciliation-process-to-enact-health-reform-would-be-fully-consistent-with-past>

** www.waysandmeans.house.gov

*** <https://www.cassidy.senate.gov/imo/media/doc/Section%20by%20Section%20Final.pdf>

Note: ABA's HSA Council advised and supports the Hatch, Rubio S. 403 www.hsacouncil.com

Focus on HSAs



- Employer and employee contributions (pre-tax through IRC 125 Cafeteria Plan potentially included in “price calculation” for so-called “Cadillac Plans” high value excise tax) *
- A. Section 4980I was added to the Code by § 9001 of PPACA, as amended by § 10901 of PPACA, and as further amended by § 1401 of HCERA. Section 4980I is effective for taxable years beginning after December 31, 2017. *
- Department of Labor so-called reintroduced “Fiduciary Rule.” **
- A. Definition of the Term “Fiduciary”; Conflict of Interest Rule — Retirement Investment Advice [4/20/2015]

* Section 4980I — Excise Tax on High Cost Employer-Sponsored Health Coverage Notice 2015-16, <http://www.irs.gov/pub/irs-drop/n-15-16.pdf>

** <http://webapps.dol.gov/FederalRegister/HtmlDisplay.aspx?DocId=28201&AgencyId=8>

ABA's HSA Council Reasons to Exclude



- **Cadillac Tax and Fiduciary Rule (Summarized ABA's HSA Council)**
- **Cadillac Tax*:**

HSA's are not insurance plans/ownership:

Field Assistance Bulletin (FAB) 2004-12 that "HSAs generally will not constitute employee welfare benefit plans" at all. DOL reasoned that HSAs are personal healthcare savings vehicles rather than a form of group health insurance. For example, funds deposited in an HSA generally may not be used to pay health insurance premiums, and the beneficiaries of the account have sole control and are exclusively responsible for expending the funds in compliance with the requirements of the Code.

Behavior of HSA owners:

- A. Account contributions tend to increase as employees age and prepare for retirement.
- B. Individuals who have a chronic condition (diabetes, COPD, etc.) contribute more, presumably because they know they'll be using the account frequently.

- **Fiduciary Rule**:**

- A. HSAs are Distinguishable From IRAs and Other Retirement Investment Arrangements and should be exempt from the proposed rule.
- B. Application of ERISA-Type Investment Rules is Inappropriate for HSA Deposit-Type Arrangements.
- C. If HSAs Are Not Excluded From the Proposed Rule, Clarify That The Platform Provider Exception Applies.
- D. The Proposed Rule should clarify that HSA Trustees/Custodians do not provide Individualized Investment advice by merely providing a menu of pre-selected HSA investment options.

<http://www.aba.com/Issues/HSA/Documents/ABA%20HSAC%20Letter%20on%20Excise%20Tax%205-15-15.pdf>

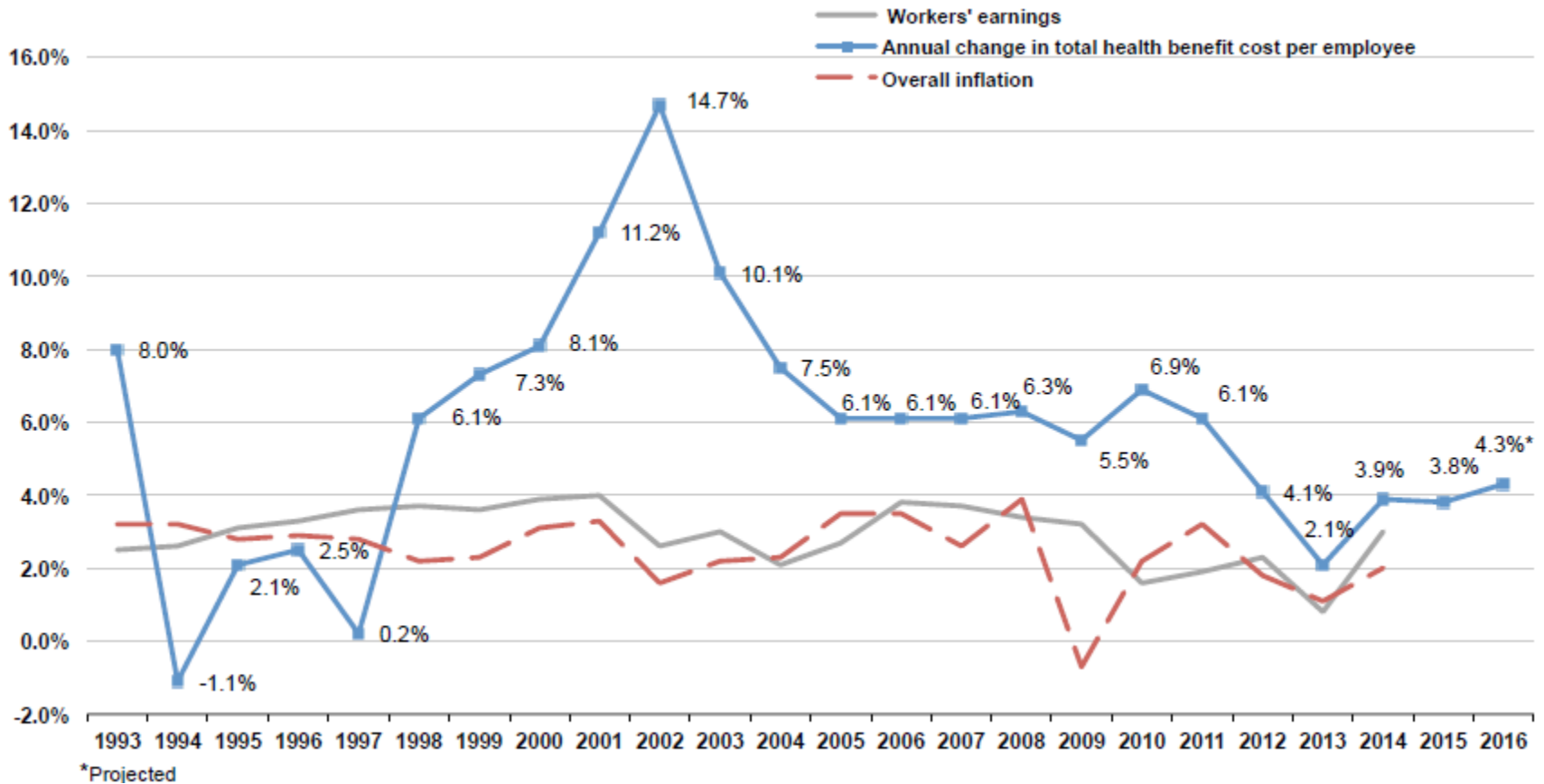
**excerpted from projected conclusions in ABA HSAC Advisory Letter to IRS Dated May 15, 2015
www.aba.com/Issues/HSA/.../default.aspx



Employer Trends

Facts

Average Annual Increases in Health Benefit Costs



Cost growth slowed in 2016, but faster growth is predicted for 2017

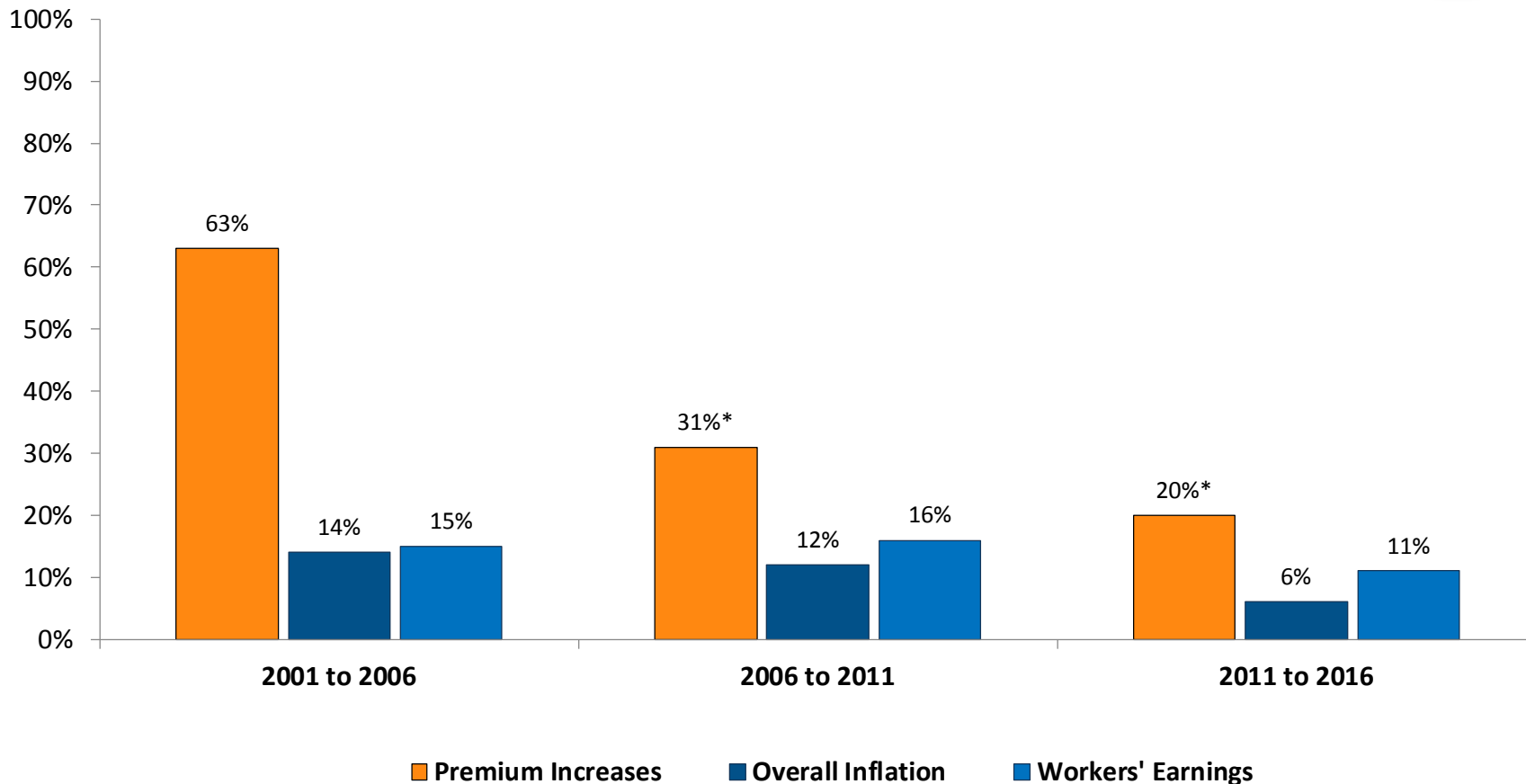
The underlying trend – the average cost increase before plan changes – remains around 6%, far outpacing inflation.

- Source: Mercer's National Survey of Employer-Sponsored Health Plans www.Mercer.com
- <https://www.mercer.us/our-thinking/health/mercer-national-survey-2017.html>

Costs Increasing for Employees & Employers



Cumulative Premium Increases for Covered Workers with Family Coverage, 2001-2016



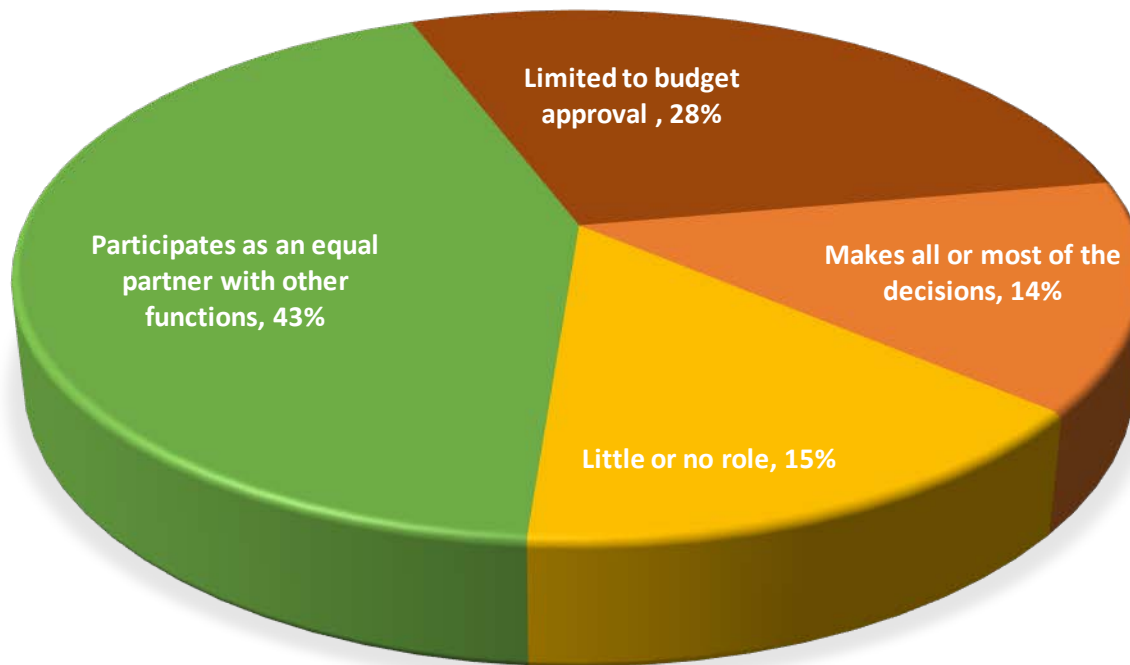
* Percentage change in family premium is statistically different from previous five year period shown ($p < .05$).

SOURCE: Kaiser/HRET Survey of Employer-Sponsored Health Benefits, 2001-2016. Bureau of Labor Statistics, Consumer Price Index, U.S. City Average of Annual Inflation (April to April), 2001-2016; Bureau of Labor Statistics, Seasonally Adjusted Data from the Current Employment Statistics Survey, 2001-2016 (April to April).

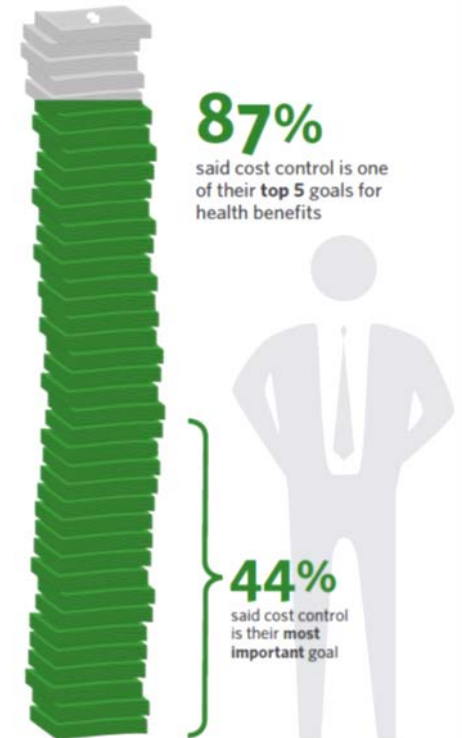
Confluence of Co-Joined Goals (CFO/HR)*



CFO ROLE IN MAKING DECISIONS ABOUT HEALTH-RELATED BENEFITS



CFOs are motivated by more than costs.

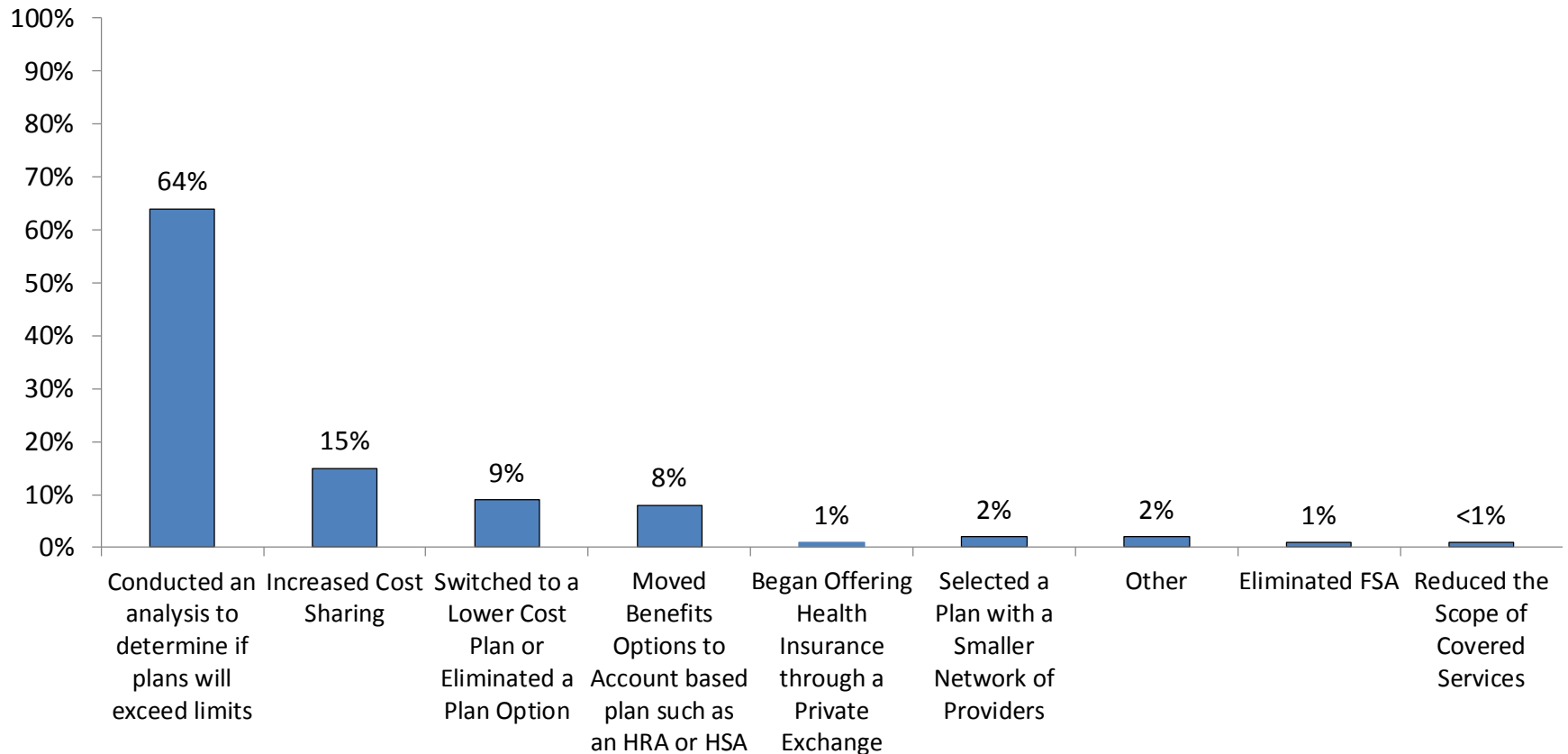


* Source: Integrated Benefits Institute: IBI CFO Survey - https://www.ibiweb.org/https://ibiweb.org/?ACT=65&id=txXzdlgpsFVTvP9VW7-kanTr0ATrBiyR29sqaD2yTShKz0yi_sBY7RYS0sPtLYPLfnyhq0dZyT632TSRL5WFgw

Employers React to Cadillac Tax

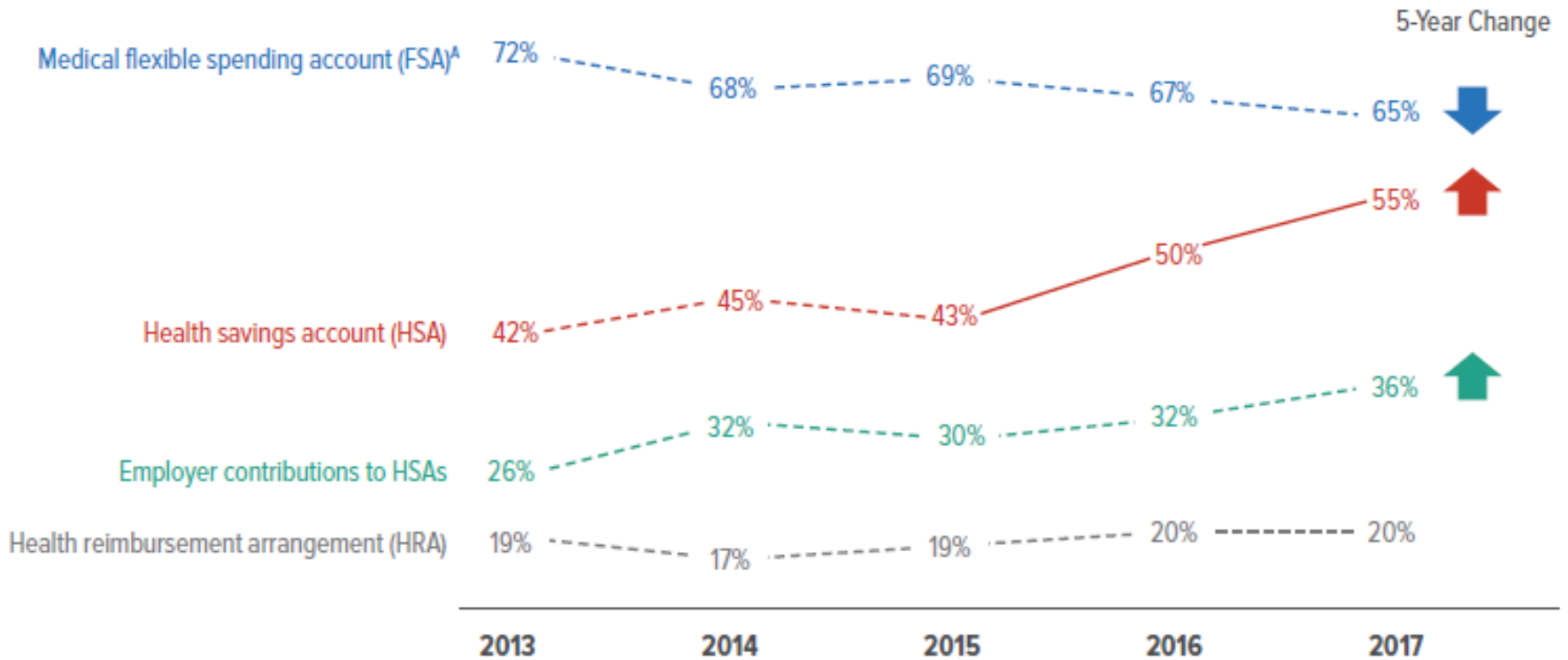


All Large Firms (200 or More Workers)



SOURCE: Kaiser/HRET Survey of Employer-Sponsored Health Benefits, 2016
www.KFF.org

MORE ORGANIZATIONS OFFER AND CONTRIBUTE TO HEALTH SAVINGS ACCOUNTS



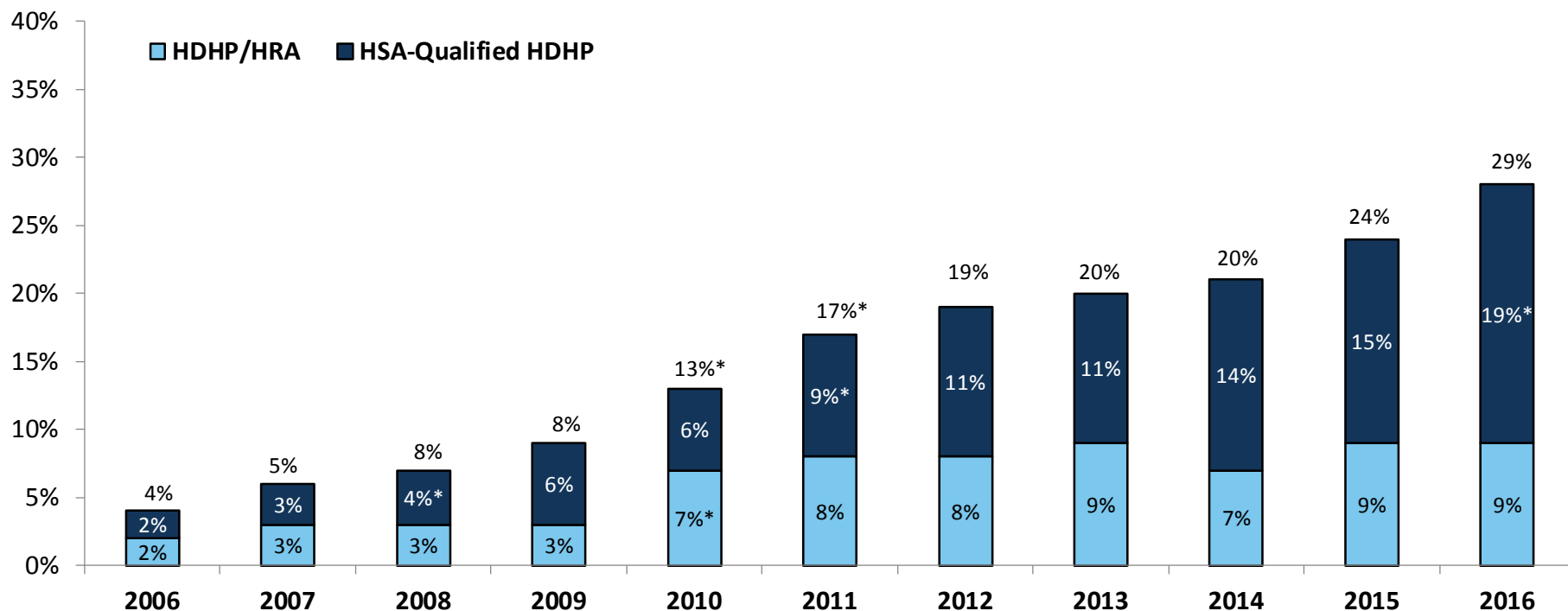
Source: 2017 Employee Benefits (SHRM) www.SHRM.org

[https://www.shrm.org/hr-today/trends-and-forecasting/research-and-surveys/Documents/2017 Employee Benefits Report.pdf](https://www.shrm.org/hr-today/trends-and-forecasting/research-and-surveys/Documents/2017%20Employee%20Benefits%20Report.pdf)

Shift to HDHP / HSA Continues



Percentage of Covered Workers Enrolled in an HDHP/HRA or an HSA-Qualified HDHP, 2006-2016

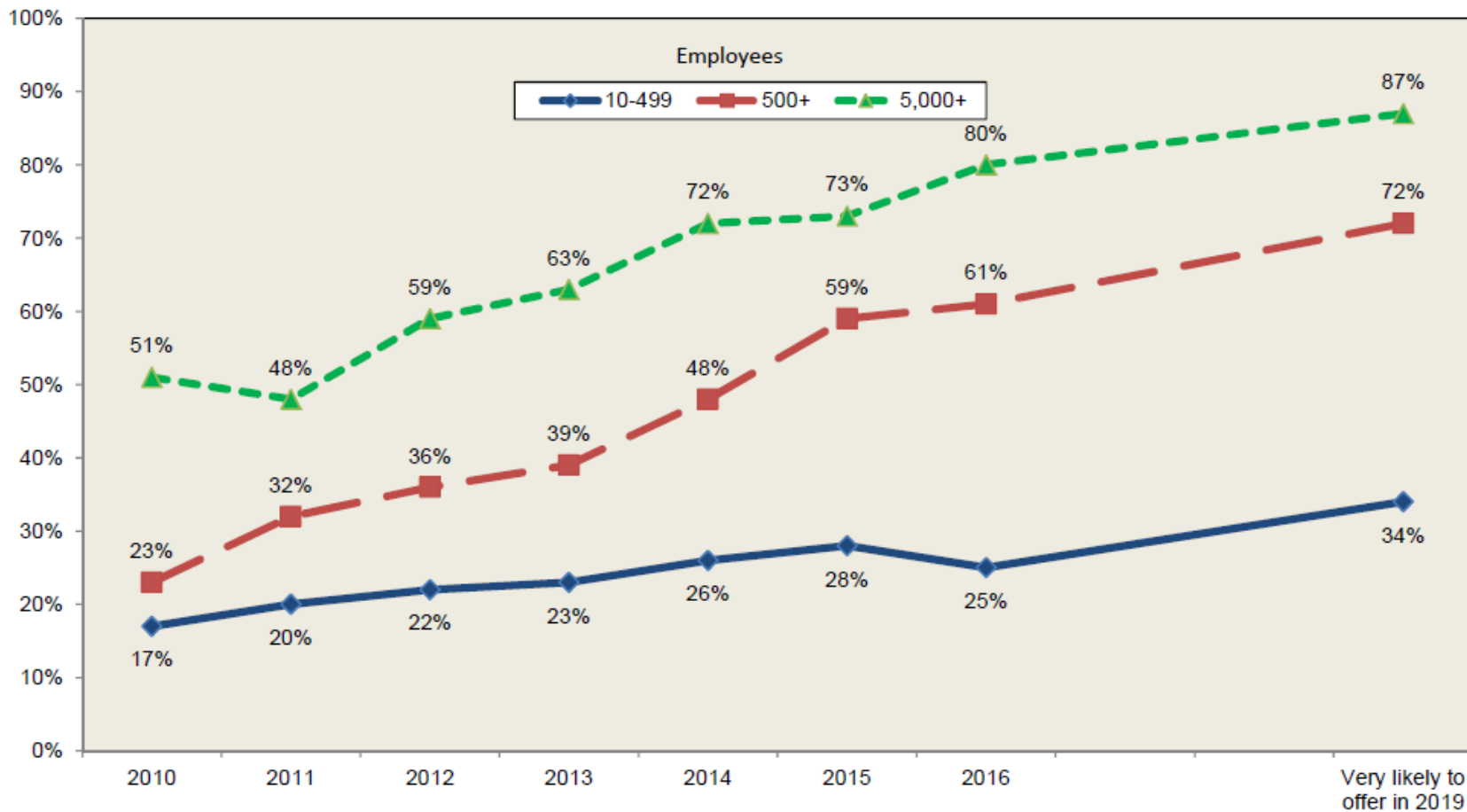


NOTE: Covered Workers enrolled in an HDHP/SO are enrolled in either an HDHP/HRA or a HSA-Qualified HDHP. For more information, see the Survey Methodology Section. The percentages of covered workers enrolled in an HDHP/SO may not equal the sum of HDHP/HRA and HSA-Qualified HDHP enrollment estimates due to rounding.

SOURCE: Kaiser/HRET Survey of Employer-Sponsored Health Benefits, 2006-2016.

www.kff.org

Percentage of Employers Offering HSA-Eligible Health Plan/HRA

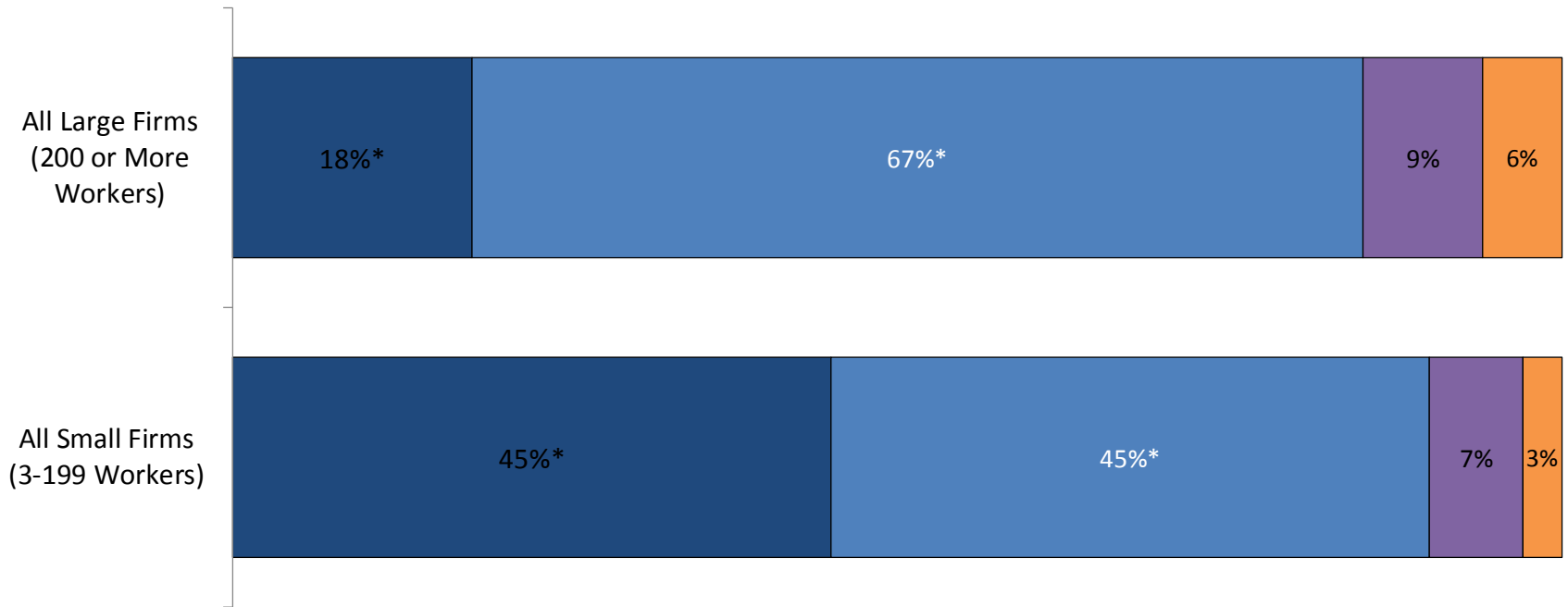


Source: Figure 6 in <http://www.mercer.com/newsroom/national-survey-of-employer-sponsored-health-plans-2016.html>

% Percentage of Employers Various Approaches to Family Premium Contributions



- Firm contributes the same dollar amount for family coverage as for single coverage
- Firm contributes a larger dollar amount for family coverage than single coverage
- Some other approach
- Varies by class of employees



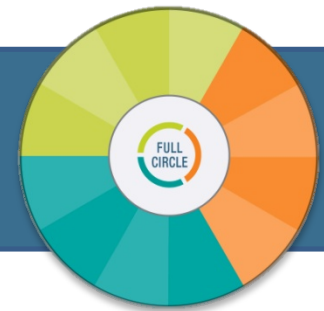
*SOURCE: Kaiser/HRET Survey of Employer-Sponsored Health Benefits, 2016. www.KFF.com



Employer Trends

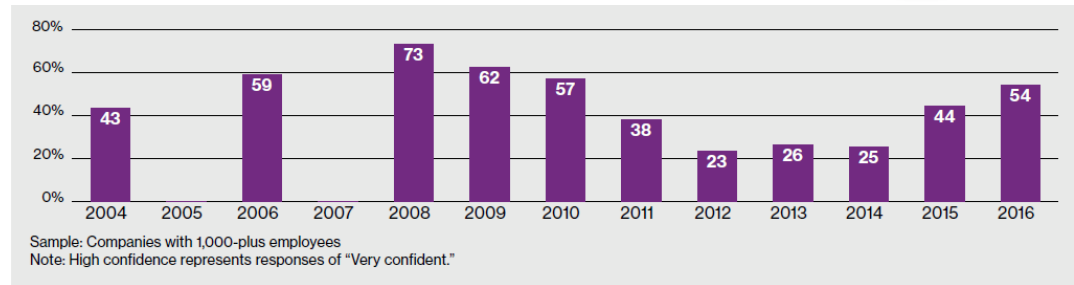
Sentiments

Employer Sentiment: By the Numbers



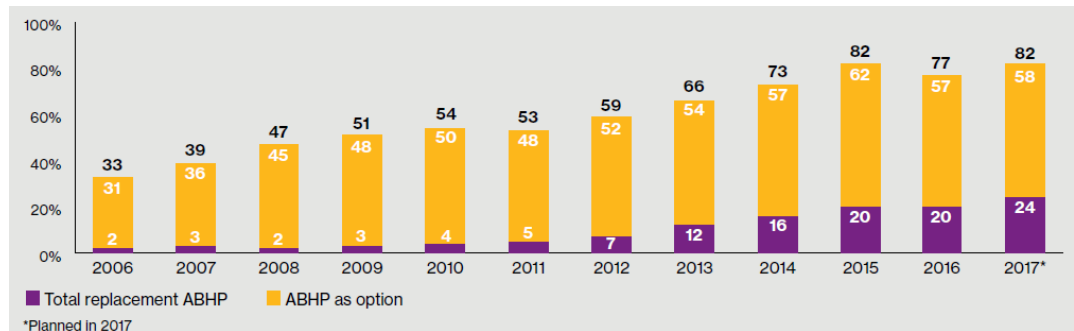
Employer Health Benefits: It's here to stay

- Employer confidence in sponsoring healthcare benefits in 10 years increased over the last five years



Continued Trend to ABHP as employers' only plan

- Nearly four in five companies offer an ABHP
- **82%** plan to offer ABHPs in 2017
- **24%** plan to offer as their only plan
- **91%** will include an HSA
- **83%** will seed the employees' HSA
- **41%** promote the value of ABHPs with a year-round communication strategy, moving to **68%** in 2017 and **80%** in 2018.
- As their workforce age into a retirement mindset, 50% of employers will incorporate education on the benefits of an HSA into their retirement planning tools.



Employer Trends: Top Priorities



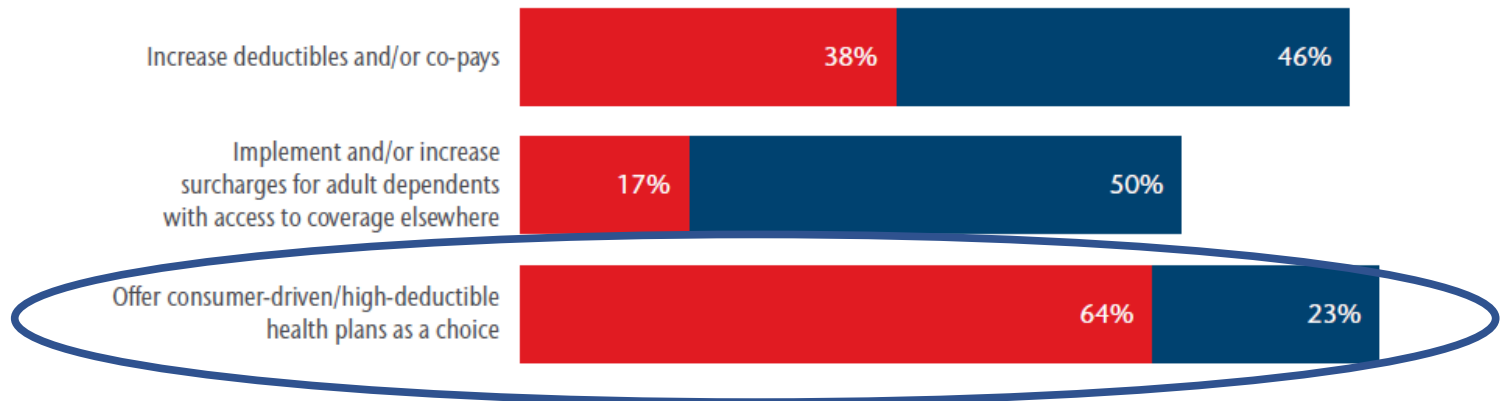
The top three priorities for employers are managing pharmacy costs, evaluating health program design value and increasing participation in health and well-being.

Other priorities for employers include:

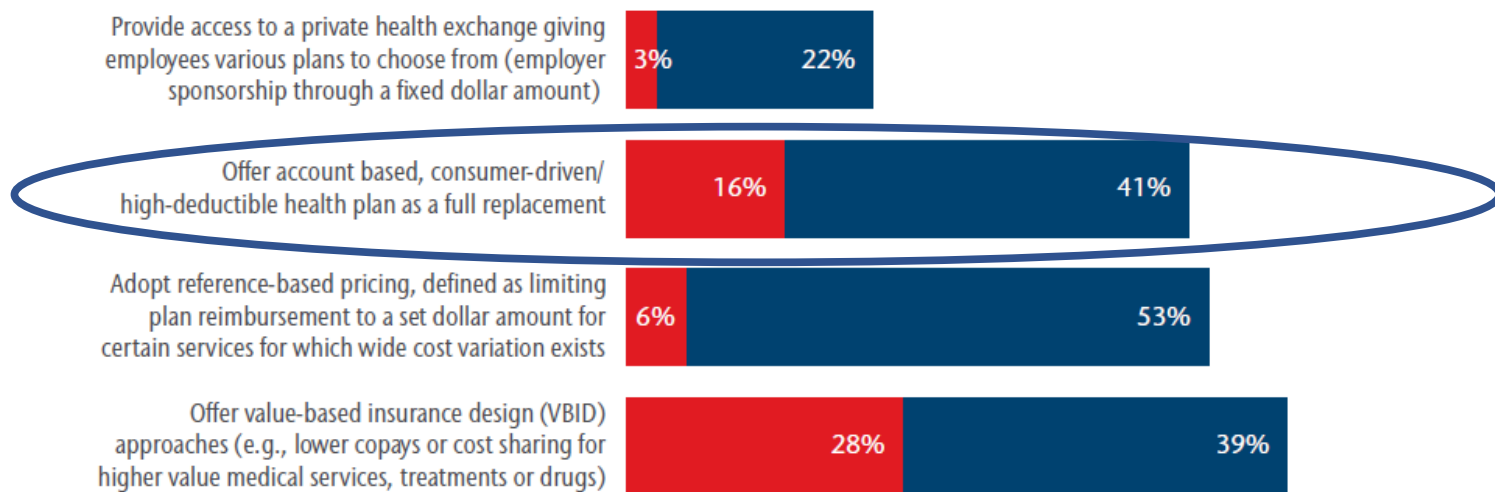
- Evaluate overall health program design value and subsidy levels (81%)
- Increase participant engagement in health and well-being (81%)
- Identify and effectively manage population health risks (71%)
- Evaluate vendor partnerships to determine the entities best-positioned to help deliver on the company's strategy (68%)
- Access health care delivery and networking strategy to maximize the purchasing value of health care services (63%)
- Evaluate spousal and dependent subsidies and their participation in the health program (53%)

Employer Trends: Incremental and Transformational

Incremental Changes



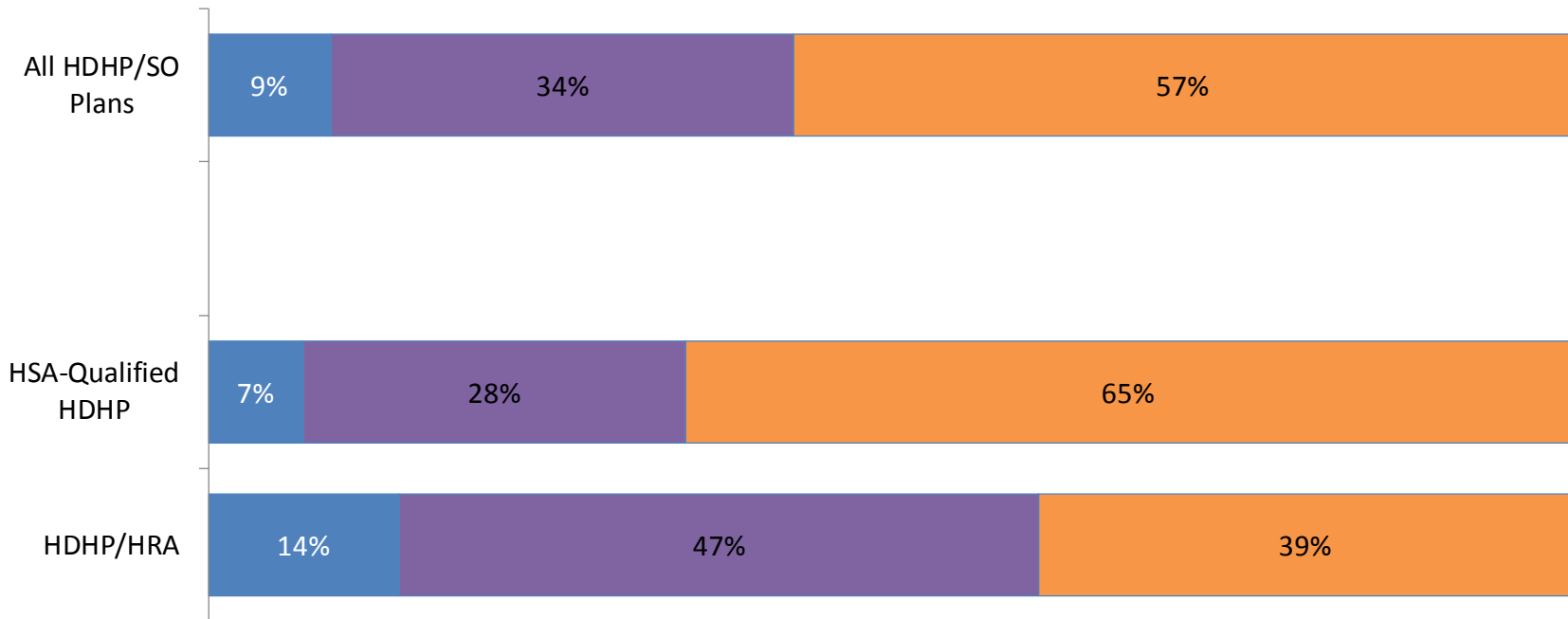
Transformational Changes in Sponsoring Health Benefits



HDHP/SO, Average Annual Deductibles for Single Coverage After HRA/HSA Contributions, 2016



- Account Contribution Greater Than or Equal To Deductible
- Deductible After Contribution Is \$1,000 or Less
- Deductible After Contribution Is More Than \$1,000



NOTE: The net liability for covered workers enrolled in a plan with an HSA or HRA is calculated by subtracting the account contribution from the single coverage deductible. HRAs are notional accounts, and employers are not required to actually transfer funds until an employee incurs expenses. General annual deductibles are for in-network services.

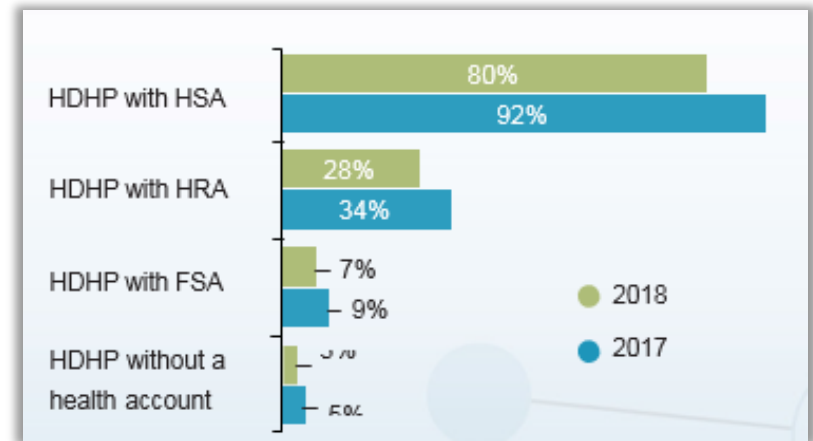
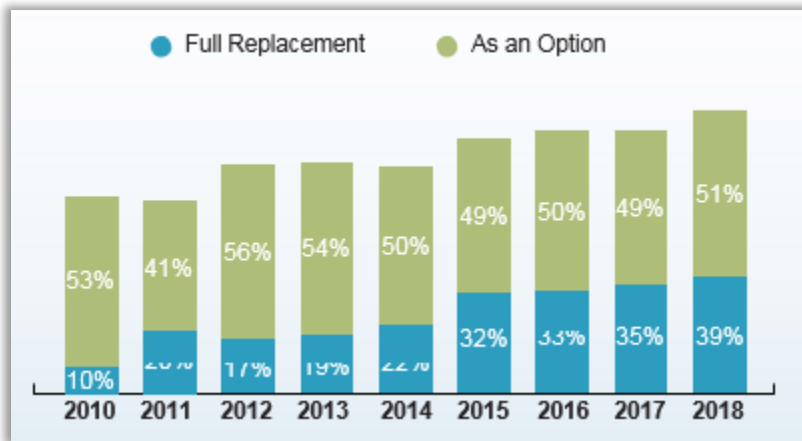
SOURCE: Kaiser/HRET Survey of Employer-Sponsored Health Benefits, 2016. www.kff.org



Employer Trends

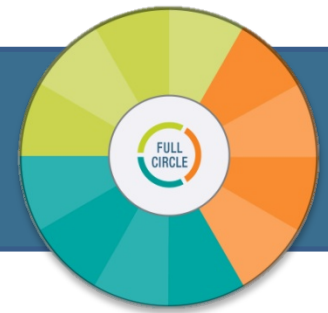
Tactics

Looking Ahead – Large Group Market



- The adoption of CDHPs continues to increase among large employers. In 2018, **90%** of employers will offer at least one CDHP, up significantly from 84% in 2017.
- The percentage of employers who will offer only CDHPs to their employees has increased, from 35% in 2017 to **39%** in 2018.
- By 2020, nearly all large employers (97%) will offer a CDHP as an option

Employer Trends: Workforce Well-being



In the crosshairs: the realization that a healthier and more financially secure employee equals a more productive employee.

- Top priority: Change hearts and minds by building corporate culture of well-being and encouraging healthy behavior and lifestyle
- Focus on boosting health care engagement and consumerism
- Focus on the (4) pillars of employee well-being
 - Physical
 - Emotional
 - Financial
 - Social



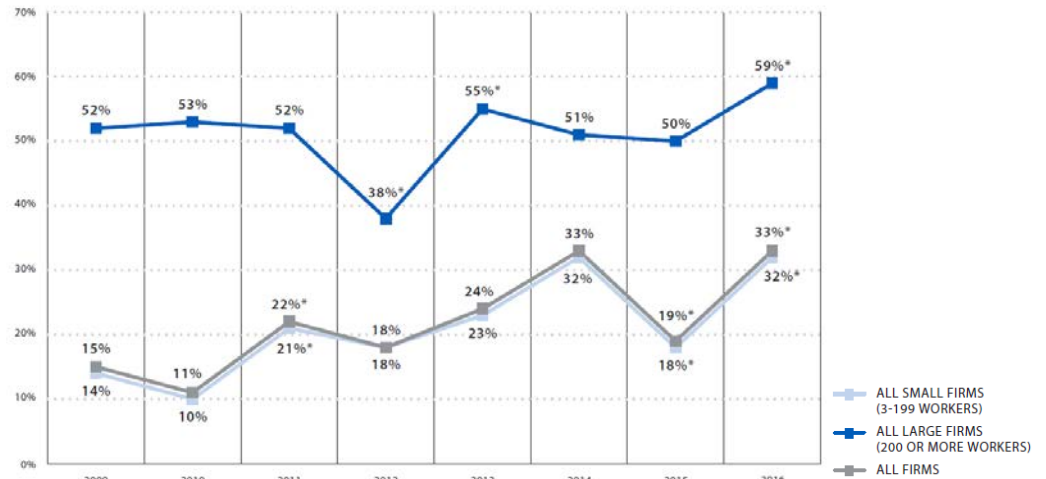
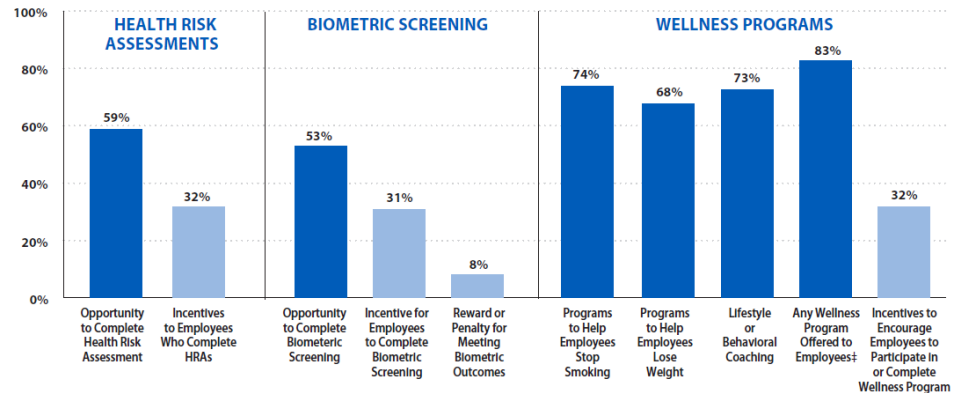
Employer Trends: Carrot or a Stick



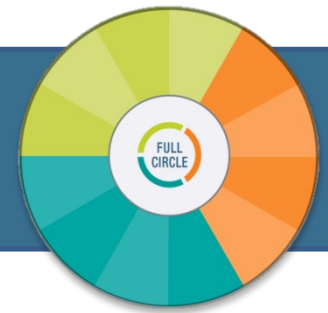
Employers are using a “carrot” in the form of financial incentives to drive employee behavior and increased participation in health and well-being programs.

- Identify health issues
 - Health Risk Assessments
 - Biometric Screenings
 - Health / Wellness Promotion Programs
- Take steps to improve their health
 - Exercise programs
 - Health education classes or courses
 - Stress management counseling
 - Health coaching
 - Smoking cessation programs
 - Weight loss and/or lifestyle programs

Among Large Firms (200 or More workers) Offering Health Benefits, Percentage of Firms Offering Incentives for Various Wellness and Health Promotion Activities, 2016

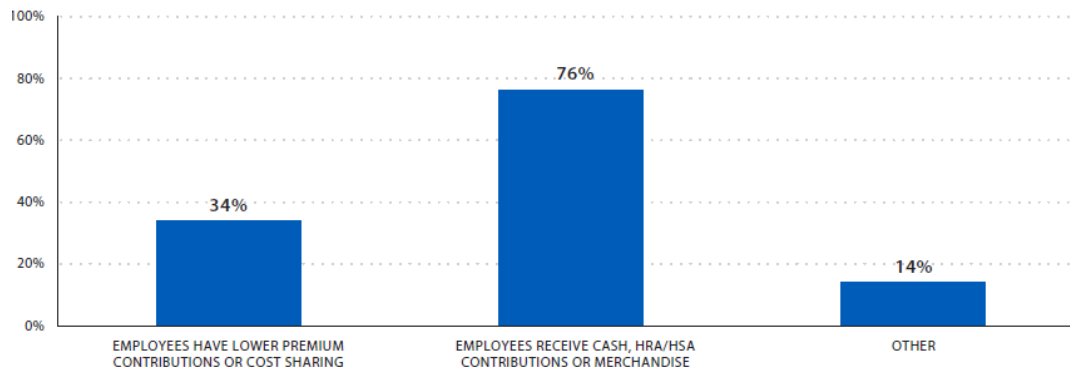


Employer Trends: Incentives

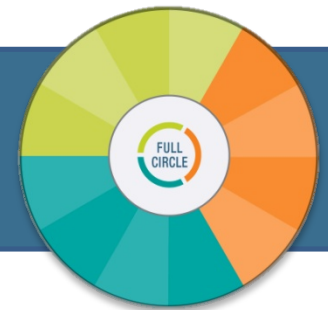


Employers are using different tactics deliver incentives to drive participation in or complete wellness programs.

- Lower Premiums or Reduced Cost Sharing
- Gift Cards or Merchandise
- **HSA / HRA contributions**
- Leverage incentives to drive participation
 - 26% maximum incentive less than \$150
 - 35% maximum incentive between \$150 and \$500
 - 23% maximum incentive between \$500 and \$1,000
 - 9% maximum incentive between \$1,000 and \$2,000
 - 7% maximum incentive of \$2,000 or more

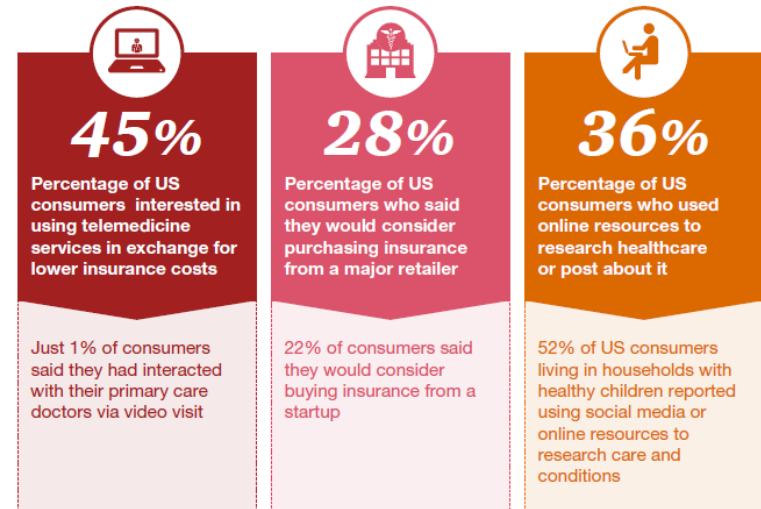


Employer Trends: On the Horizon



Consumerism growing the market for platforms and support by driving consumers to options that are cheaper, more efficient and convenient.

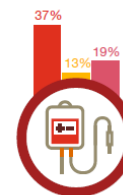
- Leverage technology
 - New platforms and enhanced websites
 - Wellness experiences and tracking tools
- New ways to shop for care
 - Telemedicine
 - Retail clinics
- Make better health decisions
 - Access to information; cost vs. value
 - Cost transparency and estimating tools



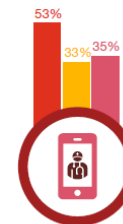
How likely would you be to choose the following for yourself if it cost you less than a traditional option and the technology or service were available?



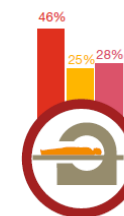
Send a digital photo of a rash or skin problem to a dermatologist for an opinion



Have dialysis at a medical clinic in a retail store



Have a live visit with a physician via an application on your smartphone



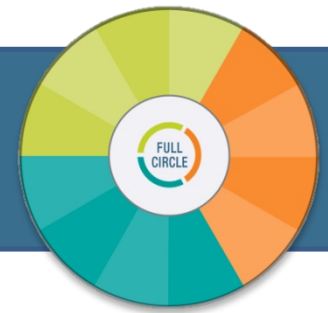
Get an MRI at a clinic in a retail store or pharmacy

■ **Healthy families:**
US households with healthy dependent children under the age of 18.

■ **Consumers with chronic disease:**
US consumers with problems affecting a single body system such as hypertension and require uncomplicated disease management.

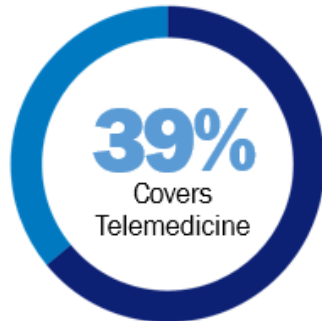
■ **Consumers with complex chronic disease:**
US consumers living with one or more chronic diseases affecting multiple body systems and requiring complicated disease management

Employer Trends: On the Horizon



An example of new avenues for the efficient and convenient delivery of routine healthcare services is the increased use of telemedicine.

Telemedicine on the Move...



LARGE
[200 or more workers]
COMPANIES





Disclosure



Results vary by organization and we cannot guarantee a particular level of results for your organization.

The webinar you will view was prepared for general information purposes only and is not intended as legal, tax or accounting advice or as recommendations to engage in any specific transaction, including with respect to any securities of PNC, and do not purport to be comprehensive. Under no circumstances should any information contained in this webinar be used or considered as an offer or commitment, or a solicitation of an offer or commitment, to participate in any particular transaction or strategy. Any reliance upon any such information is solely and exclusively at your own risk. Please consult your own counsel, accountant or other advisor regarding your specific situation. Neither PNC Bank nor any other subsidiary of The PNC Financial Services Group, Inc. will be responsible for any consequences of reliance upon any opinion or statement contained here, or any omission. The opinions expressed are not necessarily the opinions of PNC Bank or any of its affiliates, directors, officers or employees.

PNC is a registered mark of The PNC Financial Services Group, Inc. (“PNC”)

Banking and lending products and services, bank deposit products and Treasury Management services for clients and/or customers are provided by PNC Bank, National Association, a wholly-owned subsidiary of PNC and **Member FDIC**.

Important Investor Information: Brokerage and insurance products are:

Not FDIC Insured • Not Bank Guaranteed • May Lose Value

©2017 The PNC Financial Services Group, Inc. All rights reserved.



Questions



- HR Benefits
- HR Management
- HR Services

We're proud to offer a full-circle solution to your HR needs. BASIC offers collaboration, flexibility, stability, security, quality service and an experienced staff to meet your integrated HR, FMLA and Payroll needs.

Contact Us

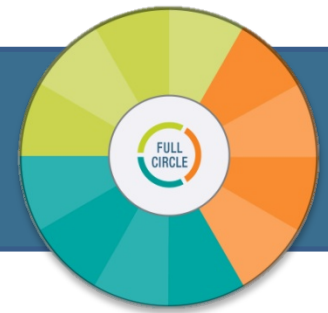


HR solutions should be simple.
Keep it BASIC.



800.444.1922
sales@basiconline.com

Contact Us



Joe Aitchison

Vice President

800-444-1922 X 236

JAitchison@basiconline.com



Michael Stoddard

COO

800-444-1922 X 224

MStoddard@basiconline.com



Disclaimer



This presentation is designed to provide accurate information in regard to the subject matter covered. It is provided with the understanding that BASIC is not engaged in rendering legal or other professional services. If legal advice or other expert assistance is required, the services of a competent attorney or other professional person should be sought. Due to the numerous factual issues which arise in any human resource or employment question, each specific matter should be discussed with your attorney.