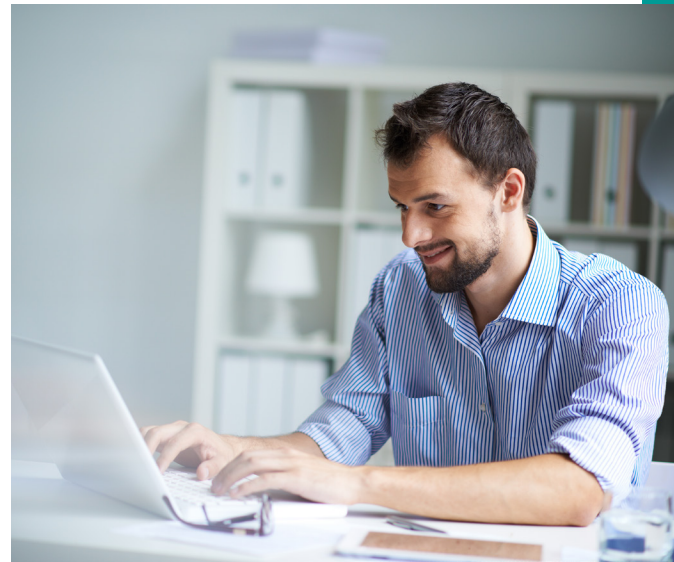




Enroll in Consumer Driven Accounts[®] (CDA) online.

During open enrollment, sign in to the [CDA portal](#) to review your employer's benefit plans and make your benefit account selections.

1. Click **ENROLL NOW** in the bar at the top of your screen. Benefit plans are listed in the left navigation menu.



1 041719 - Healthcare FSA 041719 - Healthcare FSA

2 Parking Account Your contribution

3 Review Enrollment

Your annual contribution amount Approximate deductions per paycheck

\$0.00 = \$0.00

2. Enter your contribution amounts and scroll down to review important benefit plan dates and details.
3. Click to proceed, or **Skip** if you did not make any selections.
 - You can also use the left navigation menu to move between benefit plans.
4. Click **Review enrollment** to go over your selections.
 - To change a benefit plan election, click **Edit contribution**.
 - To unenroll from a benefit plan, click **Unenroll**.
5. When all changes are complete, click **Done**.



The annual amount you enter (left) is rounded down per paycheck.



The per paycheck amount you enter (right) automatically determines the annual contribution amount.



Benefit plans with a monthly election will not include the deduction per paycheck field.



Your employer may need to approve your enrollment after you make your selections.